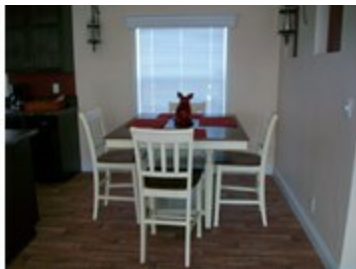


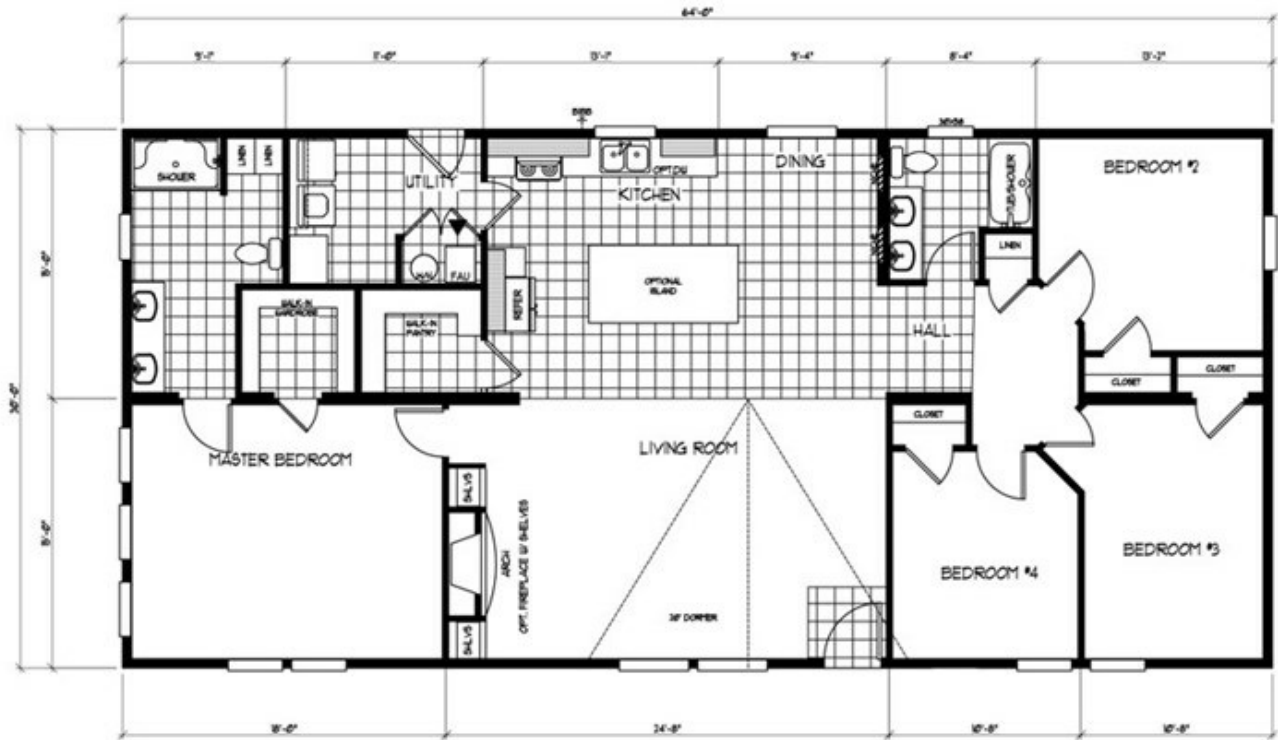


KA6029 - KARSTEN SIMPLE - #5



# KA6029 - KARSTEN SIMPLE - #5 Model number: 93KSS30644BH15

4 beds • 2 baths • 1920 sq.ft. • 30' width • 64' depth



Our home building facilities invest in continuous product and process improvements. Plans, dimensions, features, materials, specifications and availability are subject to change without notice or obligation. Renderings and floor plans are representative likenesses of our homes and may differ from the actual homes. We invite you to tour a Home Center near you and inspect the highest value in quality housing available or call (307) 635-3100 to speak with a Home Consultant. Copyright 2017, CMH. All rights reserved.

## CLAYTON HOMES-CHEYENNE

2400 SOUTH GREELEY HIGHWAY  
CHEYENNE, WY 82007

Monday - Thursday: 9am - 7pm

Friday: 9am - 6pm

Saturday: 9am - 5pm

Sunday: Closed

(307) 635-3100